

2026
BYD ATTO 3



FASTER · FURTHER · SMARTER



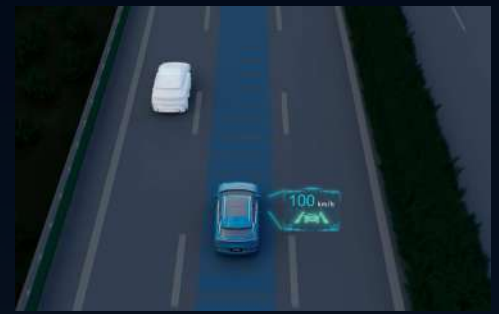
FASTER

- 0 - 100km/h in just 5.5s.
- DC fast charging up to 220kW.



FURTHER

- Driving Range up to 600km.



SMARTER

- Drive Safely with Smart Function (Enhanced ADAS system).

2026 BYD ATTO 3 SPECIFICATIONS

Item	Ultra	Premium
Dimensions		
Overall Length (mm)	4,455	
Overall Width (mm)	1,875	
Overall Height (mm)	1,615	
Wheel Track - Front / Rear (mm)	1,580	
Wheelbase (mm)	2,720	
Ground Clearance Unladen (mm)	175	170
Ground Clearance Laden (mm)	150	
Front Trunk Capacity (L)	-	101
Luggage Capacity - Min (L)	434	490
Luggage Capacity - Max (L)	1,340	1,360
Kerb Weight (kg)	1,750	1,880
Gross Vehicle Mass (kg)	2,160	2,410
Powertrain		
Motor Type	Permanent Magnet Synchronous Motor	
Drivetrain	Front-wheel Drive	Rear-wheel Drive
Maximum Power (kW)	150	230
Maximum Torque (N·m)	310	380
Performance		
Acceleration 0-100km/h (s)	7.3	5.5
Driving Range: NEDC (km)	480	600
Seating Capacity	5	
Battery Type	BYD Blade Battery	
Battery Capacity (kWh)	60.48	74.88
Chassis		
Front Suspension	Macpherson strut	
Rear Suspension	Multi-link	
Front Brake	Ventilated disc	
Rear Brake	Disc	Ventilated disc
Wheel Type	Alloy	
Tyre Size	235/50 R18	
New Energy		
AC Charging Port - Type 2	7kW	11kW
DC Charging Port - CCS 2	110kW	220kW
Extended Range		
V2L Function	•	
Regenerative Braking	•	
Entertainment		
FM Radio	•	
*Bluetooth® Phone Connectivity and Audio Streaming	•	
15.6" Intelligent Touch Screen	•	
Dirac HD Sound®, 8 Speakers	•	
*Apple CarPlay® (Wired & Wireless)	•	
Voice Assistant	•	
*Music Streaming	•	
USB - C Port × 1 + USB - A Port × 1, Centre Console	•	
USB - C Port × 1 + USB - A Port × 1, Rear	•	

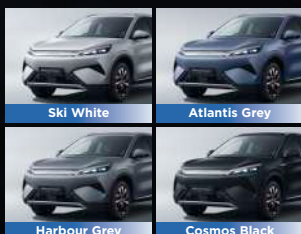
Item	Ultra	Premium
Safety and Security		
Front Airbags - Driver & Front Passenger	•	
Side Airbags - Driver & Front Passenger	•	
Side Curtain Airbags - Front & Rear	•	
Front Far-Side (Centre) Airbag	-	•
Seat Belt Reminder - Front & Rear	•	
Tyre Pressure Monitoring System (TPMS)	•	
ISOFIX Child Restraint Anchorage Points	•	
Anti-Lock Braking System (ABS)	•	
Electric Parking Brake System (EPB)	•	
Electronic Stability Control (ESC)	•	
Traction Control System (TCS)	•	
Electronic Brake Force Distribution (EBD)	•	
Hill Descent Control (HDC)	•	
360° View Monitor	•	
Front 2 Radars	•	
Rear 4 Radars	•	
Auto Hold	•	
Stop & Go Full Speed Adaptive Cruise Control (ACC-S&G)	•	
Automatic Emergency Braking System (AEB)	•	
Front Collision Warning (FCW)	•	
Rear Collision Warning (RCW)	•	
Blind Spot Detection (BSD)	•	
Door Open Warning (DOW)	•	
Lane Departure Warning (LDW)	•	
Lane Keeping Assist (LKA)	•	
Rear Cross Traffic Alert (RCTA)	•	
Rear Cross Traffic Brake (RCTB)	•	
Intelligent Speed Limit Control (ISLC)	-	•
Traffic Sign Recognition (TSR)	-	•
Front Cross Traffic Alert (FCTA)	-	•
Front Cross Traffic Brake (FCTB)	-	•
Exterior		
Panoramic Sunroof With Electric Slide and Anti-trap	•	
Electric Unlock Tailgate	•	
One-touch Open / Close Tailgate	•	
Roof Rack	•	
Electrically Heated and Adjustable Exterior Mirrors	•	
Electrically Retractable Exterior Mirrors	•	
Interior		
Steering Wheel Mounted Controls - Audio, Phone, ACC and Multi-Function Display	•	
Electric Power Assisted Steering System	•	
8.8" Digital Instrument Panel	•	
Roof Mounted Glasses Case	•	
Vegan Leather Seat	•	
Height-Adjustable Front Seat Headrest	•	
Centre Console Storage Compartment	•	
60/40 Split Fold Rear Seats	•	
6-Way Power Adjustment - Driver Seat	•	
4-Way Lumbar Adjustment - Driver Seat	-	•
6-Way Power Adjustment - Front Passenger Seat	-	•
4-Way Power Adjustment - Front Passenger Seat	•	-
Driver and Front Passenger Ventilated Seats	•	

Item	Ultra	Premium
Light		
LED Headlight	•	
Follow Me Home Headlight	•	
Adaptive Front Light (AFL)	•	
LED Daytime Running Light	•	
LED Rear Light	•	
Multi-Color Charging Port Light	•	
Multi-Color Gradient Ambient Lighting	•	
LED Rear Side Reading Lights	•	
Luggage Compartment Light	•	
Comfort & Convenience		
Wireless Phone Charger (50W)	•	
Rain-Sensing Wipers	•	
12V Socket	•	
Keyless Entry & Keyless Start	•	
Portable Card Key	•	
Bluetooth Key	•	
BYD Digital Key	•	
4-Door Window One Touch Up-Down With Anti-Pinch	•	
Automatic Single-Zone Air Conditioner	•	-
Automatic Dual-Zone Air Conditioner	-	•
PM2.5 Air Filter	•	
Tyre Repair Kit	•	

Notice

- The real Range is influenced by many factors such as individual driving style, load, traffic etc. The declared range is estimated for reference only.
- Bluetooth® is a registered trademark of Bluetooth SIG, Inc. Compatibility and functionality varies depending on device.
- Apple CarPlay® is a registered trademark of Apple Inc. Requires compatible device.
- Android Auto™ is a registered trademark of Google Inc. Compatibility and functionality varies depending on device.
- BYD Digital Key is compatible with iOS or Android devices, which include iPhone, Samsung Galaxy or Google Pixel™.
- Music streaming requires hotspot or over Wi-Fi.
- Colors depicted are a guide only and may vary from actual colours due to the printing.
- Driving assist system are not a substitute for the driver's responsibility of the vehicle.
- BYD reserves the right to vary vehicle specifications and standard features from those detailed in this brochure.

EXTERIOR COLOR OPTIONS



INTERIOR



DIMENSIONS



SIME DARBY BEYOND AUTO SDN. BHD.

Sime Darby Motors City, No. 6, Jalan PJU 1A/7, Ara Damansara, 47301 Petaling Jaya, Selangor, Malaysia.

1300-38-1888 <http://byd.simemotors.my/>

BYD Cars Malaysia

BYD | **sime**
MOTORS

PRICE PACKAGE*	2026 BYD ATTO 3			
2026 BYD ATTO 3 (EAST MALAYSIA)	Ultra		Premium	
	Personal	Company	Personal	Company
RECOMMENDED RETAIL PRICE (RRP)	RM129,300		RM142,300	
ROADTAX (1 YEAR)	RM160		RM335	
REGISTRATION FEES	RM60			
HP OWNERSHIP ENDORSEMENT FEES	RM50			
EV PLATE FEES (INCLUDING BASE PLATE)	RM150		RM150 <small>(Additional charges apply for express service from the government appointed supplier.)</small>	
INSPECTION FEES (B2)	RM200			
ON-THE-ROAD PRICE (WITHOUT INSURANCE)	RM129,920		RM143,095	

SERVICE PACKAGE**

STANDARD Include: <ul style="list-style-type: none"> • Reducer Oil Service • Air Conditioning Filter Service • Brake Fluid Service • Drive Motor Coolant Service • Air Conditioning Refrigerant Service 	3 YEARS	RM1,688
	6 YEARS	RM3,888
	8 YEARS	RM4,888
PLUS Additional: <ul style="list-style-type: none"> • Tyre Alignment, Balancing and Rotation • Windscreen Washer Fluid Replacement • Wiper Blades Replacement • Remote Control Battery • 12V Battery Replacement • Brake Pads Replacement (Front & Rear) • Brake Discs Replacement (Front & Rear) 	6 YEARS	RM12,888
	8 YEARS	RM20,688

WARRANTY PACKAGE**

6 YEARS or 150,000KM	8 YEARS or 160,000KM	8 YEARS or 160,000KM
Vehicle Warranty	Drive Unit Warranty <small>(Motor, Motor Controller, Motor Controller with DC Assembly, High Voltage Electric Control Assembly)</small>	High-Voltage Blade Battery Warranty
3 YEARS or 60,000KM	<ul style="list-style-type: none"> • Multimedia System • Shock Absorber • Dust Cover • Bushing or Gasket 	<ul style="list-style-type: none"> • Wheel Bearing • PM2.5 Measuring Instrument • AC/DC Charging Port Assembly • USB Charging Port Connector
4 YEARS or 100,000KM	<ul style="list-style-type: none"> • Whole Vehicle Lights • Tyre Pressure Monitoring Module • Suspension • Ball Joint 	

*Terms & Conditions Apply:

- 1) Sime Darby Beyond Auto reserves all rights to change the Recommended Retail Price and specifications of the car.
- 2) Registration fees above are for Malaysian. Non-Malaysian fees are varied from above.
- 3) Prices are valid in Peninsular Malaysia, except Langkawi.
- 4) Prices are effective from 1st January 2026, based on the Recommended Retail Price, without insurance.
- 5) The offer above is not applicable with other promotions, unless stated otherwise.

**Terms & Conditions Apply:

- 1) Prices will remain valid until a written notice or new price list is issued by Sime Darby Beyond Auto. Sime Darby Beyond Auto reserves the right to change prices without prior notice.
- 2) The services included in each package may vary based on maintenance requirements as specified in the warranty booklet.